

JORK ENGINEERING CO. W.A LTD

CA368, 10(80)A
240V,50Hz,400imp/kWh,
400imp/ kvarh
VER:20160524

User Manual of Three-phase

Keypad Prepayment Energy meter

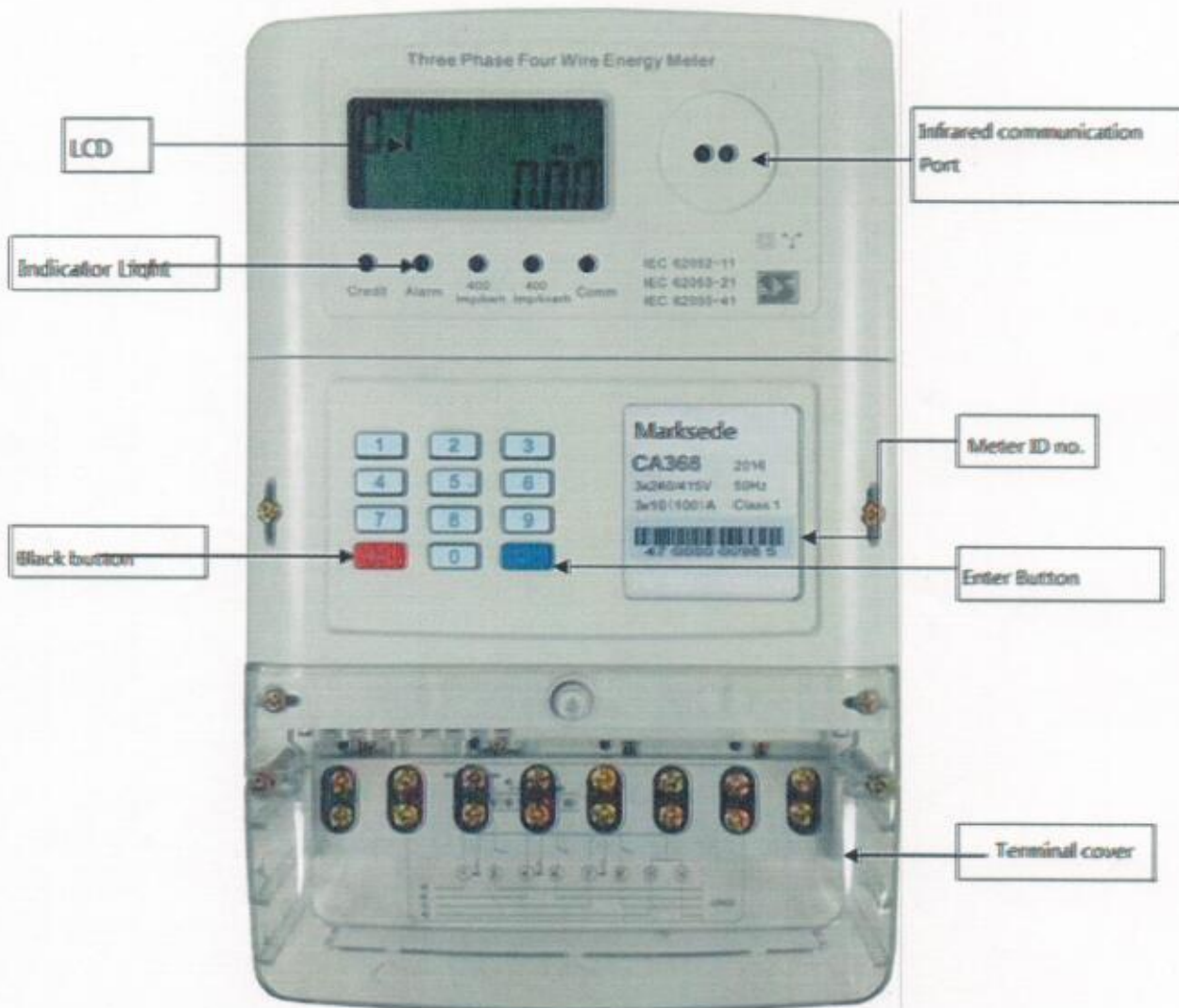
CA368

**User Manual of Three-phase Keypad
Prepayment Energy meter**

User Manual of Three-phase

Keypad Prepayment Energy meter

CA368 products are manufactured in accordance with the ISO9001 standards to ensure the reliability of the product.



1. Power purchase

- (1) Please go to the local selling electricity business hall.
- (2) To provide operator meter ID number (ID number printed on the energy meter).
- (3) Tell the operator how much you want to buy and prepay.
- (4) On the receipt, you can get a printed TOKEN "20 (Digits)"



User Manual of Three-phase

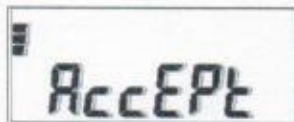
Keypad Prepayment Energy meter

2. Input purchase TOKEN into meter

- (1) Input 20 digits TOKEN into the meter.
- (2) Confirm the number on the LCD.
- (3) If token input is not correct, please use the keypad "back button" to delete.
- (4) After input 20 digits TOKEN, please click "Enter button", so that the token is confirmed.
- (5) If token input is correct, the LCD will display "accept" and buying power succeeds.
- (6) If token input is not correct, the LCD will display "reject".



3. Watt-hour meter LCD data show



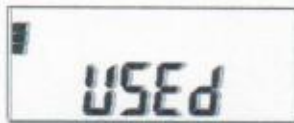
Power purchase TOKEN is correct. It will be accepted and "accept" will be displayed.



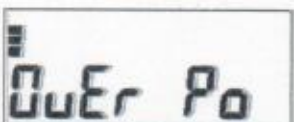
Power purchase TOKEN is incorrect. It will be rejected and "reject" will be displayed.



When "old" is displayed, it means TOKEN is out of date.



When "used" is displayed, it means the TOKEN has been used.



Overload consumption—When consumption load is over the load threshold being set, "over po" will be displayed and the power will be cut off within specified time.



It shows that energy consumption is 100.00kWh and displays item code 01.



It shows the residual(credit) energy is 100.00kWh and displays

User Manual of Three-phase

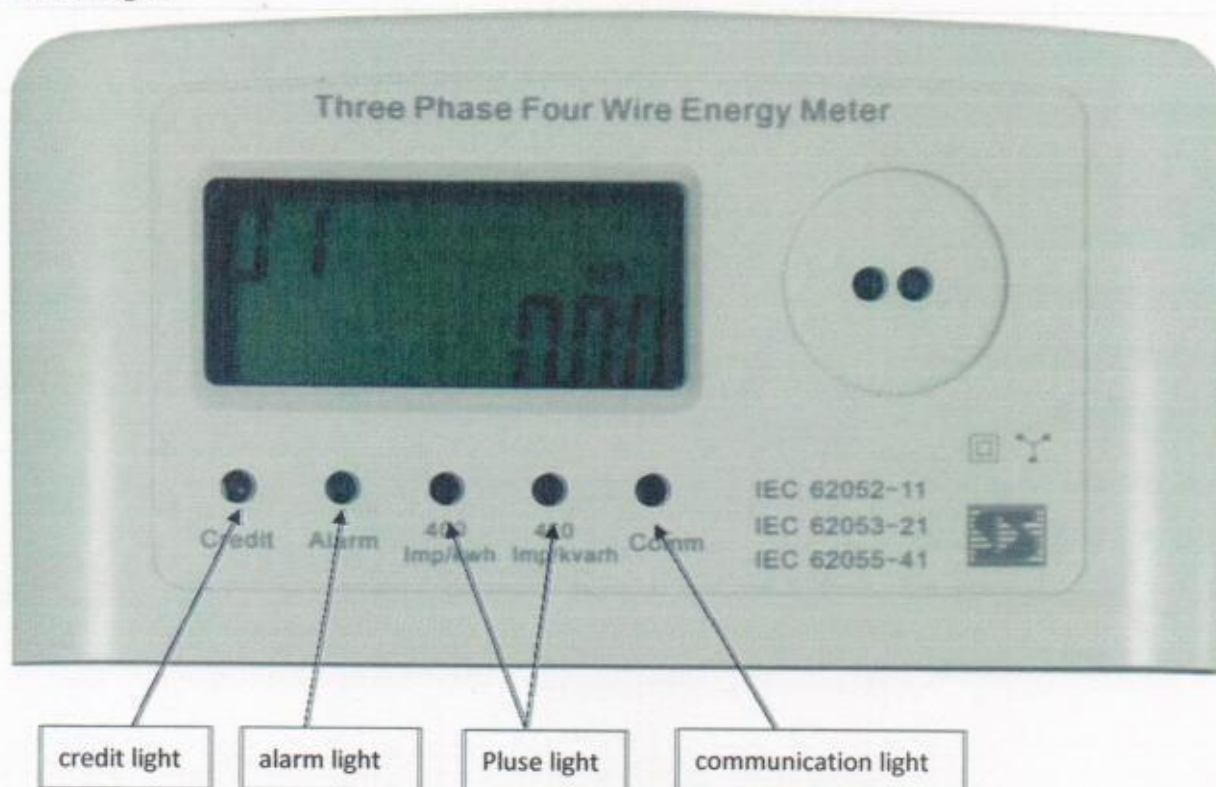
Keypad Prepayment Energy meter

item code 07.



It shows meter's present power is 1.00kW and the display item code 31.

4. LED Light



- (1) The pulse light: when a user normally uses power, the indicator light twinkles according to the pulse constant 400 imp/KWH.
- (2) The alarm indicator light: when current reverses, the alarm indicator light twinkles. When opening cover happens or the residual energy is 0, this meter will send out power-off signal to make load switch cut off power, the alarm indicator light will be turned on.
- (3) The communication indicator light: when the CIU communication with the meter, the communication indicator light flash.
- (4) The credit indicator light: when the residual amount is lower than the alarm threshold 1, the power indicator light glows yellow light. And the meter sends out power-off signal to make load switch cut off power to remind user, Power supply can be recovered by pressing any button.

User Manual of Three-phase

Keypad Prepayment Energy meter

When the residual amount is lower than the alarm threshold 2, the power light will glow red light.

5. Data item number table of meter

Display number	Meter	CIU	Display number	Meter	CIU
1	Cumulative total kWh consumption		2	Cumulative total reverse kWh consumption	
3	Cumulative total reactive power consumption	NULL	4	Cumulative total reverse reactive power consumption	NULL
5	NULL		6	Cumulative purchased amount	
7	Residual amount		8	NULL	
9	Date (year/month/day)	NULL	10	Time (hour/minute/second)	NULL
11	The alarm threshold 1		12	The alarm threshold 2	
13	Load threshold		14	NULL	
15	NULL		16	NULL	
17	NULL		18	NULL	
19	Power consumption of last month		20	Power consumption of last 2nd month	
21	Power consumption of last 3rd month		22	Power consumption of last 4th month	
23	Power consumption of last 5th month		24	Power consumption of last 6th month	
25	Power consumption of last 7th month		26	Power consumption of last 8th month	
27	Power consumption of last 9th month		28	Power consumption of last 10th month	
29	Power consumption of last 11th month		30	Power consumption of last 12th month	
31	The current total active power		32	The current A phase active power	
33	The current B phase active power		34	The current C phase active power	
35	The current total power factor	NULL	36	The current A phase power factor	NULL
37	The current B phase power factor	NULL	38	The current C phase power factor	NULL
39	NULL		40	The number of meter cover open	
41	The last cover open time		42	The last 2nd cover open time	
43	The last 3rd cover open time		44	The last 4th cover open time	
45	The last 5th cover open time		46	The number of overload break power	
47	the last overload time		48	the last 2nd overload time	
49	the last 3rd overload time		50	the last 4th overload time	
51	the last 5th overload time		52	The number of power down	
53	The last power downtime		54	The last 2nd power down time	
55	The last 3rd power down time		56	The last 4th power down time	

User Manual of Three-phase

Keypad Prepayment Energy meter

57	The last 5th power down time		58	The number of phase down	NULL
59	The last phase down time	NULL	60	The last 2nd phase down time	NULL
61	The last 3rd phase down time	NULL	62	The last 4th phase down time	NULL
63	The last 5th phase down time	NULL	64	NULL	
65	Meter Address High Bit		66	Meter Address Low Bit	
67	NULL		68	NULL	
69	NULL		70	A phase voltage	
71	B phase voltage		72	C phase voltage	
73	A phase current		74	B phase current	
75	C phase current		76	the last 1 power purchase TOKEN	NULL
77	the last 2nd power purchase TOKEN	NULL	78	the last 3rd power purchase TOKEN	NULL
79	the last 4th power purchase TOKEN	NULL	80	the last 5th power purchase TOKEN	NULL
81	Last credit kWh	NULL	82	Last 2nd credit kWh	NULL
83	Last 3rd credit kWh	NULL	84	Last 4th credit kWh	NULL
85	Last 5th credit kWh	NULL	86	Total number of token accepted	NULL
87	NULL		88	NULL	
89	NULL		90	NULL	
91	NULL		92	NULL	
93	NULL		94	NULL	
95	NULL		96	NULL	
97	NULL		98	NULL	
99	NULL				